



eSeis

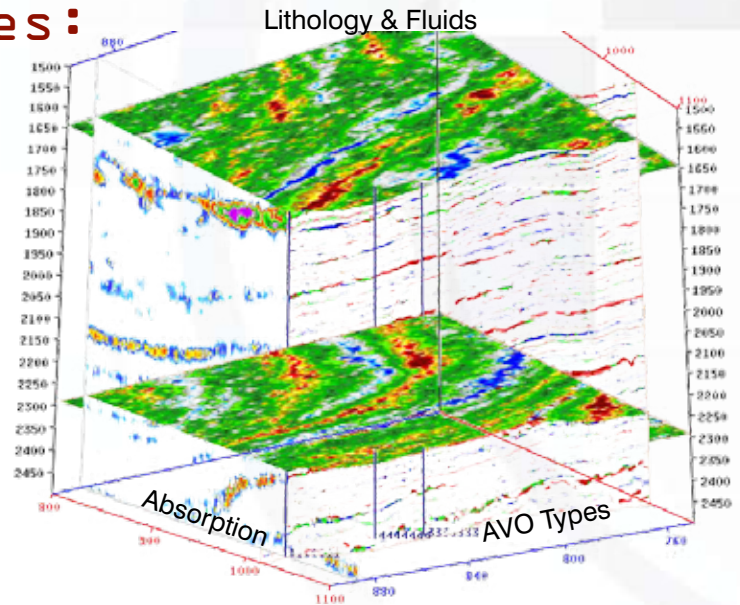
LithSeis®

LithSeis®

LithSeis is a proven seismic analysis technique that utilizes pre-stack seismic data to accurately determine volume based lithology, porosity, and pore fluids. By extracting lithologic measurements from the seismic data before stacking or averaging, the result is a more accurate rock based description of the subsurface. eSeis takes you back to the rocks to enable multi-discipline asset teams to immediately obtain benefit from seismic petrophysics.

LithSeis Deliverables:

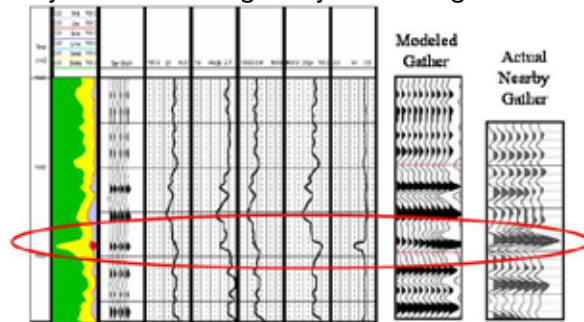
- Segy Volumes:
 - Lithology/Fluids
 - AVO Types
 - Reservoir Quality
 - Absorption
 - eSeis stack
- Rock Properties of Calibration Wells:
 - Log analysis
 - Corrected logs
 - Synthetic Seismograms



LithSeis Benefits:

- Attributes are geologically meaningful by distinguishing:
 - Porous sands
 - Tight sands
 - Laminated sands
 - Gas presence
- Quick turnaround time
- Relates to depositional facies
- Reduce cycle time
- Reduce exploration risks
- Identify pay that is low amplitude
- Identify by-passed pay
- Easily scan large volumes of data for potential reservoirs

Synthetic from Log Analysis tied to gathers



Gathers over Lithology

